

## PolyCera® Hydro 100 Ultrafiltration Ultra-High Solids Spiral Monolith® Element Specifications

### Performance & Operating Parameters

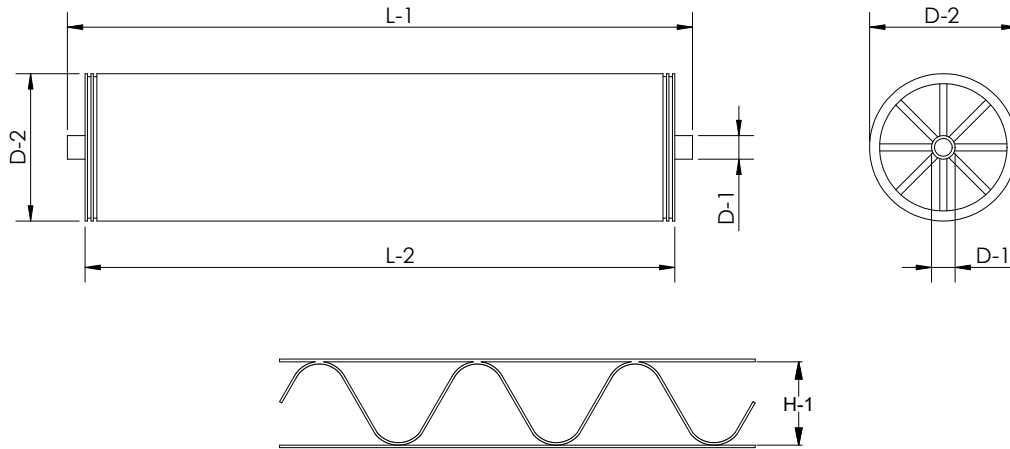
Membrane material:	PolyCera Hydro
Nominal Pore Size/MWCO:	20 nm/100 kDa
Operating pH Range:	1.0 – 12.0
Operating Temperature Range:	5°C – 50°C (41°F – 122°F)
Maximum Inlet Pressure:	8.3 bar (120 psi)
Maximum Cross-Flow Per Element:	56.8 m <sup>3</sup> /h (250 gpm)
Maximum Pressure Drop Per Element:	0.35 bar (5 psi)
Maximum Free Oil & Grease:	≤ 5 mg/L
Maximum Total Suspended Solids:	≤ 3000 mg/L
Continuous Free Chlorine:	≤ 5 mg/L
Typical Operating Flux:	20 - 200 LMH (12 - 118 GFD)
Recommended Pre-Filter:	500 µm

Model Number Size	Hydro 100XB-1812- UHS-TWM 1812	Hydro 100XB-4040- UHS-TWM 4040	Hydro 100XB-8040- UHS-FRF 8040
Active Area <i>m<sup>2</sup></i> <i>(ft<sup>2</sup>)</i>	0.11 (1.1)	2.5 (27)	11.1 (119)
Weight <i>kg</i> <i>(lb)</i>	0.45 (1)	3.5 (8)	13 (29)
Outer Wrap	Tape	Tape	Fiberglass
Endcap	Male	Male	Female
Recommend crossflow <i>m<sup>3</sup>/h</i> <i>(gpm)</i>	1.8 (8)	9.1 (40)	56.8 (250)
Filtrate flowrate* <i>m<sup>3</sup>/h</i> <i>(gpm)</i>	0.02 (0.1)	0.43 (1.9)	1.9 (8.4)
Permeate connection D-1** <i>cm</i> <i>(in)</i>	1.71 (0.67)	1.90 (0.75)	2.86 (1.13)
Element diameter D-2 <i>cm</i> <i>(in)</i>	4.6 (1.80)	10.2 (4.00)	20.3 (8.00)
Element length (Female) L-1 <i>cm</i> <i>(in)</i>	30.48 (12.00)	101.6 (40.00)	NA
Element length (Male) L-1 <i>cm (in)</i>	29.8 (11.75)	96.1 (37.93)	101.6 (40.00)
Feed channel height H-1 <i>mm</i> <i>(mil)</i>	3.05 (120)	3.05 (120)	3.05 (120)

**Note:** \*Testing condition: deionized water, 25°C, 1.7 bar (25 psi) transmembrane pressure.

Actual results will vary depending on feed water quality and operation conditions.

\*\*All element dimensions have specified tolerances of +0.00/-0.06"



## Cleaning & Chemical Exposure Guidelines

Maximum backwash pressure:	1.7 bar (25 psi)
Backwash flux:	40 - 240 LMH (24 - 144 GFD)
Standard backwash duration:	30 seconds
Maximum backwash duration:	2 minutes
Maximum cleaning temperature:	50°C (122°F) @ 10 < pH ≤ 13.5, 70°C (158°F) @ 1 ≤ pH ≤ 10
Maximum cleaning pH:	1.0 < pH < 13.5 @ 50°C (122°F), 1.0 < pH < 10.0 @ 70°C (158°F)
Hydrochloric acid:	≤ 0.4% or 1.0 Normal (pH > 1.0)
Citric acid:	≤ 20% or 1.0 Normal (pH > 1.0)
Sodium hydroxide:	≤ 4% or 1.0 Normal (pH < 13.5)
Free chlorine instantaneous/total:	100 ppm/300,000 ppm hour @ pH 11
Peroxide/Ozone:	Not compatible

- Notes:** 1) Increased crossflow during backwash enhances cleaning efficacy  
2) Backwash flux should be 1.5 to 2 times of operating flux

## Handling & Storage Instructions

### **New Element Handling & Storage Guidelines**

- ◇ Recommended storage temperature: 5°C – 20°C (41°F – 68°F). Do not freeze element
- ◇ Handle with care. Damage to elements/end-caps/ATDs can compromise performance
- ◇ It is recommended to store elements wet and horizontally
- ◇ Whenever possible, store elements in original packaging
- ◇ Drying can damage membrane surface and compromise performance
- ◇ Membrane elements should be stored in dry, dark, and ventilated conditions

## Installation & Initial Use Guidelines

- ◇ Prior to use, soak element for 24 hours with DI water then flush for at least 30 minutes
- ◇ Elements can be mounted vertically or horizontally
- ◇ When mounted vertically, it is recommended to orient feed to flow from top to bottom
- ◇ Use water or glycerin to lubricate seal

## After Use Storage & Preservation Guidelines

Use standard CIP procedure to clean feed and filtrate from the elements prior to shut down. Then perform element preservation as recommended below:

- ◇ 1 – 7 days: Sanitize element by flushing with 10 ppm bleach and adjust to pH 11 for 30 minutes. Fill up element and housing with fresh 1 ppm bleach solution, seal the housing and store
- ◇ 1 week to 6 months: Fill up element and housing with 0.3% Saniclean\* solution, seal the housing and store. Every two weeks drain the Saniclean solution from the system and flush with clean water. Refill the element and housing with 0.3% Saniclean solution, seal the housing and store.
- ◇ More than 6 months: Contact PolyCera, Inc. for further information.

**Note:** Saniclean is a USDA accepted, low-foaming acid anionic rinse product made by Five Star Chemicals & Supplies, Inc. (Colorado, USA). Please contact Five Star Chemicals & Supplies, Inc. or PolyCera, Inc. for further information.

### PolyCera, Inc.

721 S Glasgow Ave., Unit D, Los Angeles, CA 90301  
+1 424.331.7700 | [info@polyceramembranes.com](mailto:info@polyceramembranes.com)  
[polyceramembranes.com](http://polyceramembranes.com)